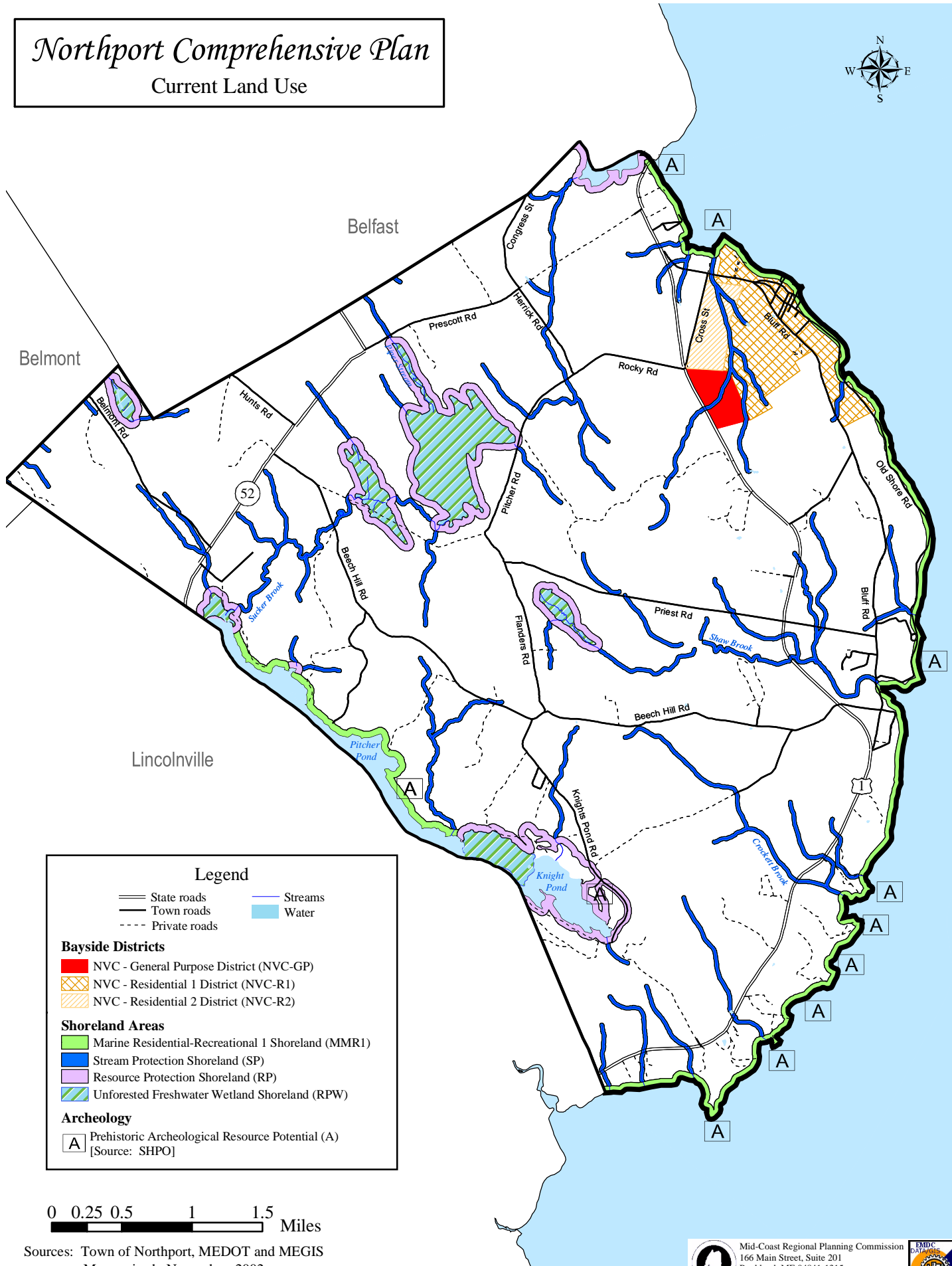


Northport Comprehensive Plan

Current Land Use



Legend

— State roads	— Streams
— Town roads	— Water
- - - Private roads	

Bayside Districts

- NVC - General Purpose District (NVC-GP)
- NVC - Residential 1 District (NVC-R1)
- NVC - Residential 2 District (NVC-R2)

Shoreland Areas

- Marine Residential-Recreational 1 Shoreland (MMR1)
- Stream Protection Shoreland (SP)
- Resource Protection Shoreland (RP)
- Unforested Freshwater Wetland Shoreland (RPW)

Archeology

- A Prehistoric Archeological Resource Potential (A)
[Source: SHPO]

0 0.25 0.5 1 1.5 Miles

Sources: Town of Northport, MEDOT and MEGIS
Map revised: November, 2002

Prepared by the Eastern Maine Development Corporation

Mid-Coast Regional Planning Commission
166 Main Street, Suite 201
Rockland, ME 04841-1315
(207) 594-2299

